

FLEX-FOOT CHEETAH® XTREME WITH NIKE SPIKE PAD



The blade of champions – inspired by the world's fastest. Cheetah Xtreme is the optimal short-distance sprinting foot, a holder of multiple world records.

Designed specifically for the fast, short-distance sprints, the carbon blade features a more extreme curve than the other Cheetahs. This dynamic shape allows the foot to flex more offering a powerful energy kick. A longer, flatter toe enhances push off, while the plantar-flexed pylon supports better forward progression.

The Nike Spike Pad has been designed exclusively for the Cheetah. It provides specialized traction that has been optimized for the blade.

A new alignment adapter for the Cheetah is now available for quicker set up and easier alignment of the blade.



USER INFORMATION	
Amputation Level:	Transfemoral and Transtibial
Impact Level:	Extreme
Maximum Patient Weight:	147kg (325lbs)



FOOT INFORMATION	
Categories:	1-9
Sizes:	One Size Per Category
Weight of Foot:	918g (32.4oz)
Max Build Height:	530mm (20 14/16")
Min Build Height:	375mm (14 3/4")
Adapter Options:	Lamination Connector

Note: Build height is from bottom of foot to center of lower bolt hole of lamination plate.

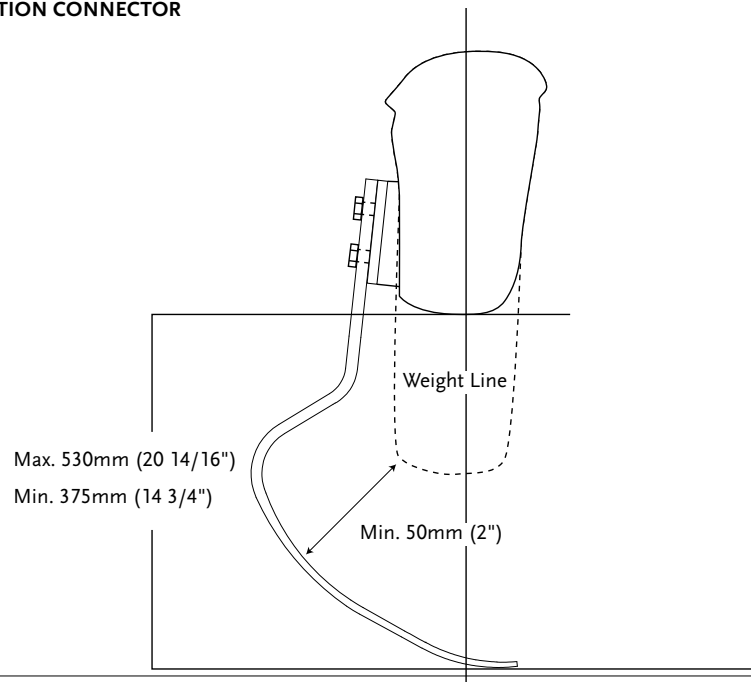
CATEGORY SELECTION CHART

WEIGHT KG	45-52	53-59	60-68	69-77	78-88	89-100	101-116	117-130	131-147
WEIGHT LBS	97-115	116-130	131-150	151-170	171-194	195-220	221-256	257-287	288-325
Extreme Impact Level	1	2	3	4	5	6	7	8	9

FLEX-FOOT CHEETAH[®] XTREME WITH NIKE SPIKE PAD

CLEARANCE

WITH LAMINATION CONNECTOR



KITS

CHEETAH XTREME KIT

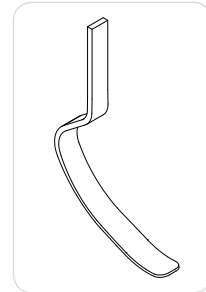
PART# CATEGORY(1-9)

FSX003

Includes:

- Cheetah Xtreme Blade
- Nike Spike Pad Kit

Note: Cheetah Xtreme is excluded from the trial period.



NIKE SPIKE PAD KIT

PART#	DESCRIPTION	CAT.
FSX50008	Nike Spike Pad	1-9

Includes:

- Nike Spike Pad
- 7mm (9/32") Pyramid Spikes
- Wrench

Note: Nike Spike Pad has same spikes as Nike track and field shoes, additional spikes can be purchased at Nike.



FLEX-FOOT CHEETAH® XTREME WITH NIKE SPIKE PAD

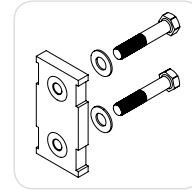
KITS

LAMINATION CONNECTOR KIT

PART#	DESCRIPTION	CAT.
FSX50009	Lamination Connector	1-9

Includes:

- Connector
- Alignment Wedges (2°, 4°, 6°, 8°)
- Attachment Hardware
- Lamination Kit

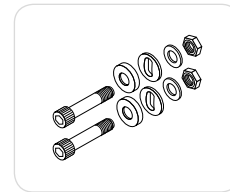


HARDWARE KIT FOR T CONNECTORS

PART#	LENGTH	WEIGHT	SIZE	CAT.
CM100055	10mm 3/8"	144g 5oz	x 2-1/2"	1-9

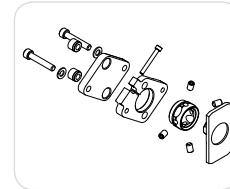
Includes:

- Bolts
- Nuts
- Spherical Washer
- Flat Washer

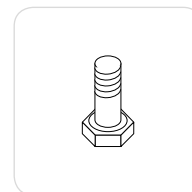


ALIGNMENT ADAPTER KIT

PART#	DESCRIPTION	CAT.
FSX50007	Alignment Adapter	ALL



PART#	DESCRIPTION	SIZE	CAT.
CM130211	Attachment Bolt for Lamination Connector	3/8"-24 x 1 1/2"	1-9
CM130213	Attachment Bolt for Lamination Connector	3/8"-24 x 1 3/4"	1-9
CM130214	Attachment Bolt for Lamination Connector	3/8"-24 x 1 3/8"	1-9



PART#	DESCRIPTION	CAT.
CM140515	Alignment Wedges 2°	ALL
CM140516	Alignment Wedges 4°	ALL
CM140517	Alignment Wedges 6°	ALL
CM140518	Alignment Wedges 8°	ALL

