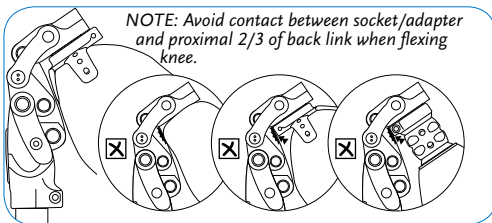
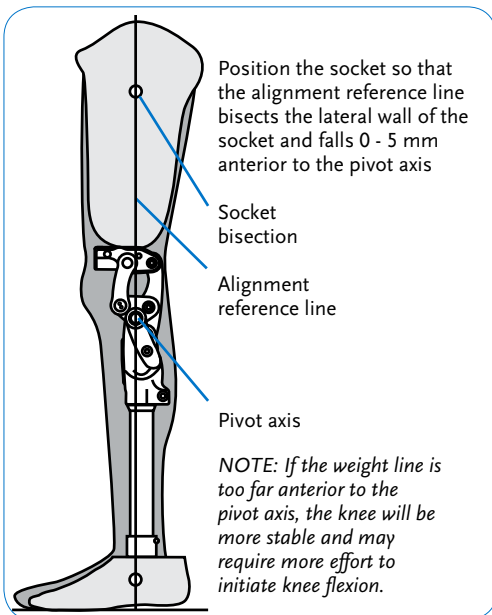


# Total Knee® System Adjustment

## ALIGNMENT RECOMMENDATIONS



## STANCE CONTROL AND STANCE FLEXION ADJUSTMENTS

T100	Color	Durometer	Patient Weight
	Green	Soft	Approx. 14-20 kg (30-45lbs)
	Black	Regular	Approx. 20-29 kg (45-65lbs)
	Red	Firm	Approx. 29-36 kg (65-80lbs)
	Yellow	Extra Firm	Approx. 36-45 kg (80-100lbs)

1900 and 2000	Color	Durometer	Patient Weight
	Green	Soft	Approx. 35-50 kg (90-120lbs)
	Black	Regular	Approx. 50-70 kg (120-160lbs)
	Red	Firm	Approx. 70-90 kg (160-200lbs)
	Yellow	Extra Firm	Approx. 90-100 kg (200-220lbs)

Z100	Color	Durometer	Patient Weight
	Black	Soft	Approx. 50-70 kg (120-160lbs)
	Red	Regular	Approx. 70-90 kg (154-198lbs)
	Yellow	Firm	Approx. 90-110 kg (198-242lbs)
	Orange	Extra Firm	Approx. 110-125 kg (242-275lbs)

### Shim Adjustment

Increasing shim height will allow for decreased stability and an earlier release of the geometric lock.

Decreasing shim height will allow for increased stability and a delayed release of the geometric lock.

### Foot Considerations:

- If the foot has a soft heel, use a soft bumper.
- If the foot has a hard heel, use a firm bumper.

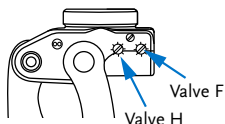
## KNEE SELECTION

TK model	Activity	Weight limit
TK1900	Non variable cadence	100 kg (220lbs)
TK2000	Variable cadence	100 kg (220lbs)
TK2100	Variable cadence with/without high impact	125 kg (275lbs)
TK1100	For all pediatric applications	45 kg (100lbs)



## SWING CONTROL ADJUSTMENTS

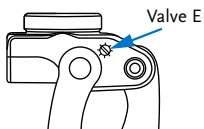
Hydraulic Resistance Adjustments - 2000 and 2100



### Flexion Resistance

- Valve "F" controls flexion resistance.
- Valve "H" controls heel rise.

NOTE: only use valve H to offset excessive heel rise for high active patients.



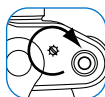
### Extension Resistance

- Valve "E" controls extension resistance.

### Factory settings:

The hydraulic valves are preset to the following settings.

- Valve F: 3/4 open
- Valve H: 3/4 open
- Valve E: 1-1/2 open



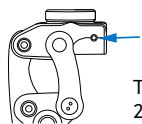
Clockwise turn closes valve - increases resistance



Counter-Clockwise turn opens valve - decreases resistance

**CAUTION!** Valve can be damaged by over tightening or flexing the knee with all the valves closed

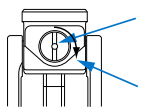
## POLYMER FRICTION SWING CONTROL ADJUSTMENTS - 1900



Set Valve

Torque Set Valve to 2Nm (17 in-lbs)

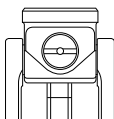
NOTE: Do not exceed 1/2 turn



Friction Adjustment Valve

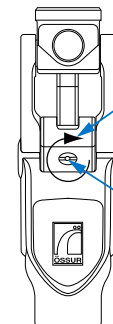
Clockwise adjustment increases friction

Minimum Resistance



Maximum Resistance  
1/4 turn

## Extension Promoter - 1100, 1900, 2000 and 2100



Clockwise rotation decreases heel rise

Extension Promoter Adjustment Screw

The purpose of the Extension Promoter is to reduce excessive heel rise. The Extension Promoter is set at minimum when shipped from Össur.

**Össur Head Office**  
Grjótháls 5  
110 Reykjavík, Iceland  
Tel: +354 515 1300  
Fax: +354 515 1366

**Össur Americas**  
Tel: +1 (949) 382 3883  
Tel: +1 800 233 6263  
Fax: +1 800 831 3160  
ossurusa@ossur.com

**Össur Canada**  
Tel: +1 604 241 8152  
Fax: +1 604 241 8153

**Össur Europe**  
Tel: +800 3539 3668  
Tel: +31 499 462840  
Fax: +31 499 462841  
info-europe@ossur.com

**Össur Nordic**  
Tel: +46 1818 2200  
Tel: +46 1818 2218  
info@ossur.com

**Össur UK**  
Tel: +44 161 490 8500  
Fax: +44 161 490 8501  
ossuruk@ossur.com

**Össur Iberia S.A.**  
Tel: +34 91 636 06 93  
Fax: +34 91 637 21 43  
ortetica@ossur.com

**Össur Asia**  
电话: +86 21 6127 1700  
传真: +86 21 6127 1799  
asia@ossur.com

**Össur Asia-Pacific**  
Tel: +61 2 88382800  
Fax: +61 2 96305310  
info-asiapacific@ossur.com



Life Without Limitations®