

---

## Quick Reference Card

---

### 1.0 KIT CONTENTS

- iPad® Air with My Livingskin color capture system
- Cleaning cloth for iPad® Air
- iPad® Air charger
- OttLite
- Diffuser - attached to light
- OttLite spare bulb
- Grey plate
- White plate
- Return packaging and label (North America Only)
- Color template (included in envelope)

### 2.0 GETTING STARTED

To use My Livingskin, please start by following the instructions below:

1. Have your order number available. Order number can be found on order acknowledgement, packing slip or is available from Customer Support
2. Ensure you have ample working space in a room with no overhead lighting and no direct sunlight
3. Set up light, plates and colour template as shown in '*Proper set up*' image
4. Ensure patient is seated with their arm positioned level with the desk
5. Clean the iPad® Air screen and camera lens with provided cleaning cloth
6. Power on the iPad® Air and start the application by tapping the My Livingskin icon
7. Ensure you have a stable data or Wi-Fi connection
8. Upon opening the application, you will be prompted to review the proper setup instructions in advance of capturing images
9. Have your images approved by customer support
10. Follow the onscreen instructions to process your order
11. Only once notified that images are successful, should impressions be completed using the provided impression kit

### NOTES:

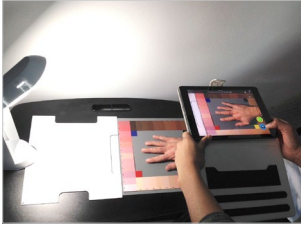
- The distal end of the patients limb should always be pointing towards the OttLite when taking photos
- Ensure impressions are taken after color capture process as impression material can change skin tone
- If creating a foot prosthesis, refer to training video for correct positioning and image taking.

### 3.0 IMAGE TAKING GUIDANCE

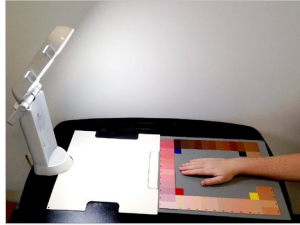
1. Hand/residual limb should be positioned 1.5" from edge of white plate. It should not cover the color template
2. Ensure good framing of image: within picture should be all of grey plate and 1" of white plate, no surroundings e.g. desk/floor
3. Ensure there is no glare on hand or grey plate

## Quick Reference Card

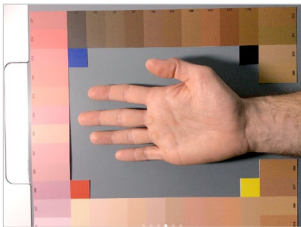
4. Ensure no shadows on the hand/residual limb
5. Examine picture after taking to ensure color is representative of skin color
6. Ensure image is in focus and not blurry



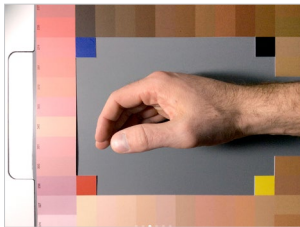
Proper set up



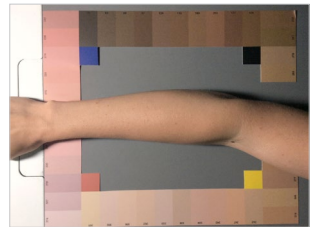
### EXAMPLE OF GOOD IMAGES



Good position

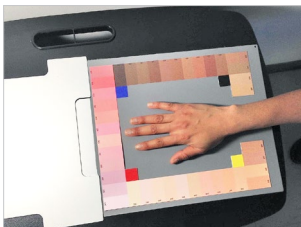


Good thumb position

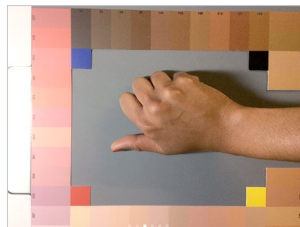


Good forearm position

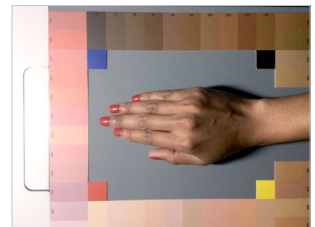
### EXAMPLE OF BAD IMAGES



Bad framing



Bad position



Bad shadow and nail polish



Össur hf.  
Grjótháls 1-5  
110 Reykjavík  
Iceland

### TRAINING VIDEO

Do you need more help with a proper setup? Please watch our training video on Youtube: [www.youtube.com/watch?v=6dlqZRxWsPo](https://www.youtube.com/watch?v=6dlqZRxWsPo)