

FLEX-FOOT CHEETAH® XTREME WITH NIKE SPIKE PAD



The blade of champions – inspired by the world’s fastest. Cheetah Xtreme is the optimal short-distance sprinting foot, a holder of multiple world records.

Designed specifically for the fast, short-distance sprints, the carbon blade features a more extreme curve than the other Cheetahs. This dynamic shape allows the foot to flex more offering a powerful energy kick. A longer, flatter toe enhances push off, while the plantar-flexed pylon supports better forward progression.

The Nike Spike Pad has been designed exclusively for the Cheetah. It provides specialized traction that has been optimized for the blade.

A new alignment adapter for the Cheetah is now available for quicker set up and easier alignment of the blade.



| User information | |
|-------------------------|--------------------------------|
| Amputation Level: | Trans-femoral and Trans-tibial |
| Impact Level: | Extreme |
| Maximum Patient Weight: | 147kg (325lbs) |



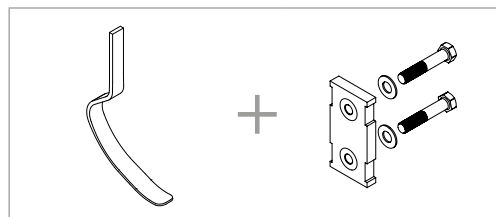
WATERPROOF

| Foot information | |
|-------------------|-----------------------|
| Categories: | 1-9 |
| Sizes: | One Size Per Category |
| Weight of Foot: | 918g (32.4oz) |
| Max Build Height: | 530mm (20 14/16") |
| Min Build Height: | 375mm (14 3/4") |
| Adapter Options: | Lamination Connector |

Note: Build height is from bottom of foot to center of lower bolt hole of lamination plate.

ORDERING INFORMATION

FOR COMPLETE CHEETAH XTREME KIT



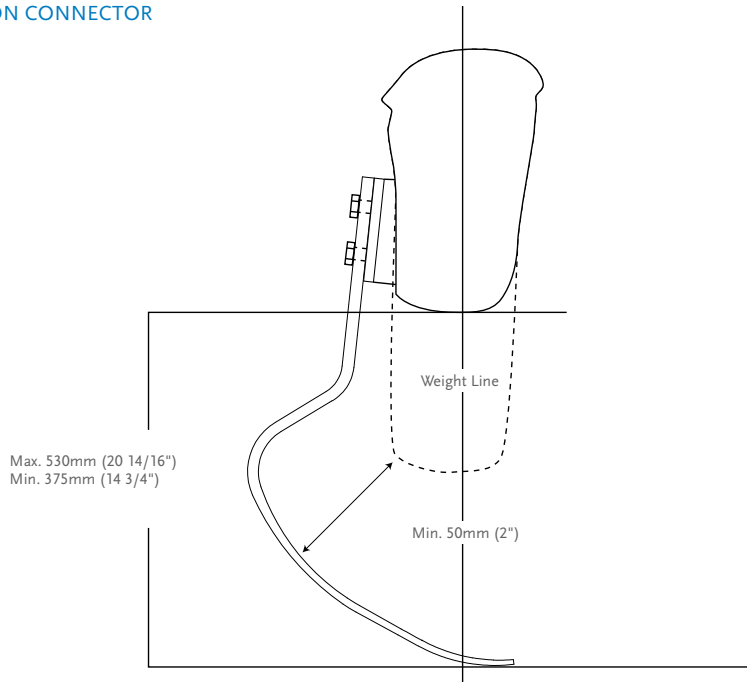
CATEGORY SELECTION CHART

| Weight kg | 45-52 | 53-59 | 60-68 | 69-77 | 78-88 | 89-100 | 101-116 | 117-130 | 131-147 |
|----------------------|--------|---------|---------|---------|---------|---------|---------|---------|---------|
| Weight lbs | 97-115 | 116-130 | 131-150 | 151-170 | 171-194 | 195-220 | 221-256 | 257-287 | 288-325 |
| Extreme Impact Level | 1 | 2 | 3 | 4 | 5 | 6 | 7 | 8 | 9 |

FLEX-FOOT CHEETAH® XTREME WITH NIKE SPIKE PAD

CLEARANCE

WITH LAMINATION CONNECTOR



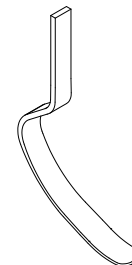
KITS

CHEETAH XTREME KIT

PART#

CATEGORY(1-9)

FSX003



Includes:

- Cheetah Xtreme Blade
- Nike Spike Pad Kit

Note: Cheetah Xtreme is excluded from the trial period.

NIKE SPIKE PAD KIT

| Part# | Description | Cat. |
|----------|----------------|------|
| FSX50008 | Nike Spike Pad | 1-9 |



Includes:

- Nike Spike Pad
- 7mm (9/32") Pyramid Spikes
- Wrench

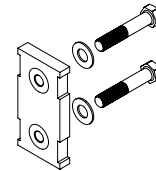
Note: Nike Spike Pad has same spikes as Nike track and field shoes, additional spikes can be purchased at Nike.

FLEX-FOOT CHEETAH® XTREME WITH NIKE SPIKE PAD

KITS

LAMINATION CONNECTOR KIT

| Part# | Description | Cat. |
|----------|----------------------|------|
| FSX50009 | Lamination Connector | 1-9 |

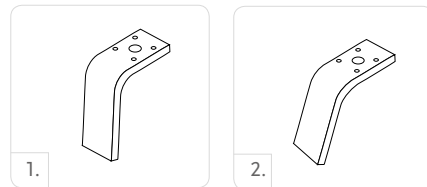


Includes:

- Connector
- Alignment Wedges (2°, 4°, 6°, 8°)
- Attachment Hardware
- Lamination Kit

L-BRACKET WITHOUT INSERTS

| Picture | Part# | Description | Cat. |
|---------|----------|-------------------------------|------|
| 1. | FSX40003 | 5° L-Bracket Without Inserts | 1-6 |
| 2. | FSX40001 | 20° L-Bracket Without Inserts | 1-6 |



L-BRACKET KITS

| Picture | Part# | Description | Cat. |
|---------|----------|--------------------|------|
| 1. | FSX50005 | 5° L-Bracket Kits | 1-6 |
| 2. | FSX50006 | 20° L-Bracket Kits | 1-6 |

Includes:

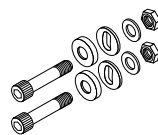
- L-Bracket without inserts
- Pyramid Attachment Hardware
- Alignment Wedges
- Alignment Hardware

HARDWARE KIT FOR T CONNECTORS

| Part# | Length | Weight | Size | Cat. |
|----------|-----------|----------|----------|------|
| CM100055 | 10mm 3/8" | 144g 5oz | x 2-1/2" | 1-9 |

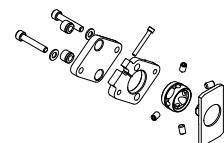
Includes:

- Bolts
- Nuts
- Spherical Washer
- Flat Washer



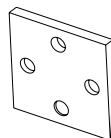
ALIGNMENT ADAPTER KIT

| Part# | Description | Cat. |
|----------|-------------------|------|
| FSX50007 | Alignment Adapter | ALL |



ALIGNMENT WEDGES

| Part# | Description | Cat. |
|----------|---------------------|------|
| CM140515 | Alignment Wedges 2° | ALL |
| CM140516 | Alignment Wedges 4° | ALL |
| CM140517 | Alignment Wedges 6° | ALL |
| CM140518 | Alignment Wedges 8° | ALL |



ATTACHMENT BOLT FOR LAMINATION CONNECTOR

| Part# | Description | Size | Cat. |
|----------|--|------------------|------|
| CM130211 | Attachment Bolt for Lamination Connector | 3/8"-24 x 1 1/2" | 1-9 |
| CM130213 | Attachment Bolt for Lamination Connector | 3/8"-24 x 1 3/4" | 1-9 |
| CM130214 | Attachment Bolt for Lamination Connector | 3/8"-24 x 1 3/8" | 1-9 |

